

Madison, Wisconsin

CITY OF MADISON

CITY ENGINEERING DIVISION

DEPARTMENT OF PUBLIC WORKS

PLAN OF PROPOSED IMPROVEMENT

OLIN TRANSFER STATION

STORMWATER IMPROVEMENT

PUBLIC IMPROVEMENT PROJECT APPROVED

AUGUST 1, 2017

BY THE COMMON COUNCIL OF MADISON, WISCONSIN

PUBLIC IMPROVEMENT DESIGN APPROVED BY:

 8/3/17
City Engineer Date

PROJECT DESIGNED BY:

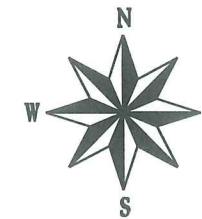
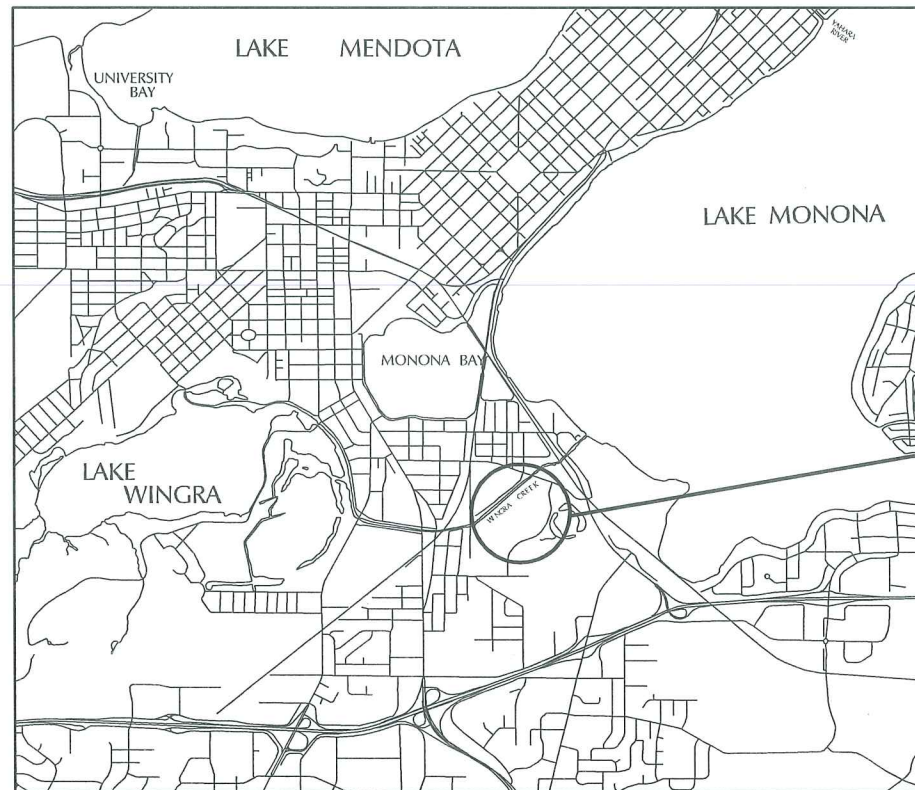


INDEX OF SHEETS

SHEET NO.	TITLE
1	OVERALL PLAN
2	SOUTHEAST ALIGNMENT
3	NORTHWEST ALIGNMENT
4	NORTH ALIGNMENT
5	SCREEN STRUCTURE DETAIL
6	TERRACE INLET TYPE 2 DETAIL
7	STORM SEWER SCHEDULE
8	

CITY PROJECT NO. 10449
CONTRACT NO. 8032

CONVENTIONAL SIGNS	
FIELD VERIFY ALL UTILITY LOCATIONS	
GAS	
STORM SEWER	
SANITARY SEWER	
WATER	
OVERHEAD ELECTRIC	
POWER POLE	
HANDICAP RAMP	
COMBUSTIBLE FLUIDS	



PROJECT LOCATION

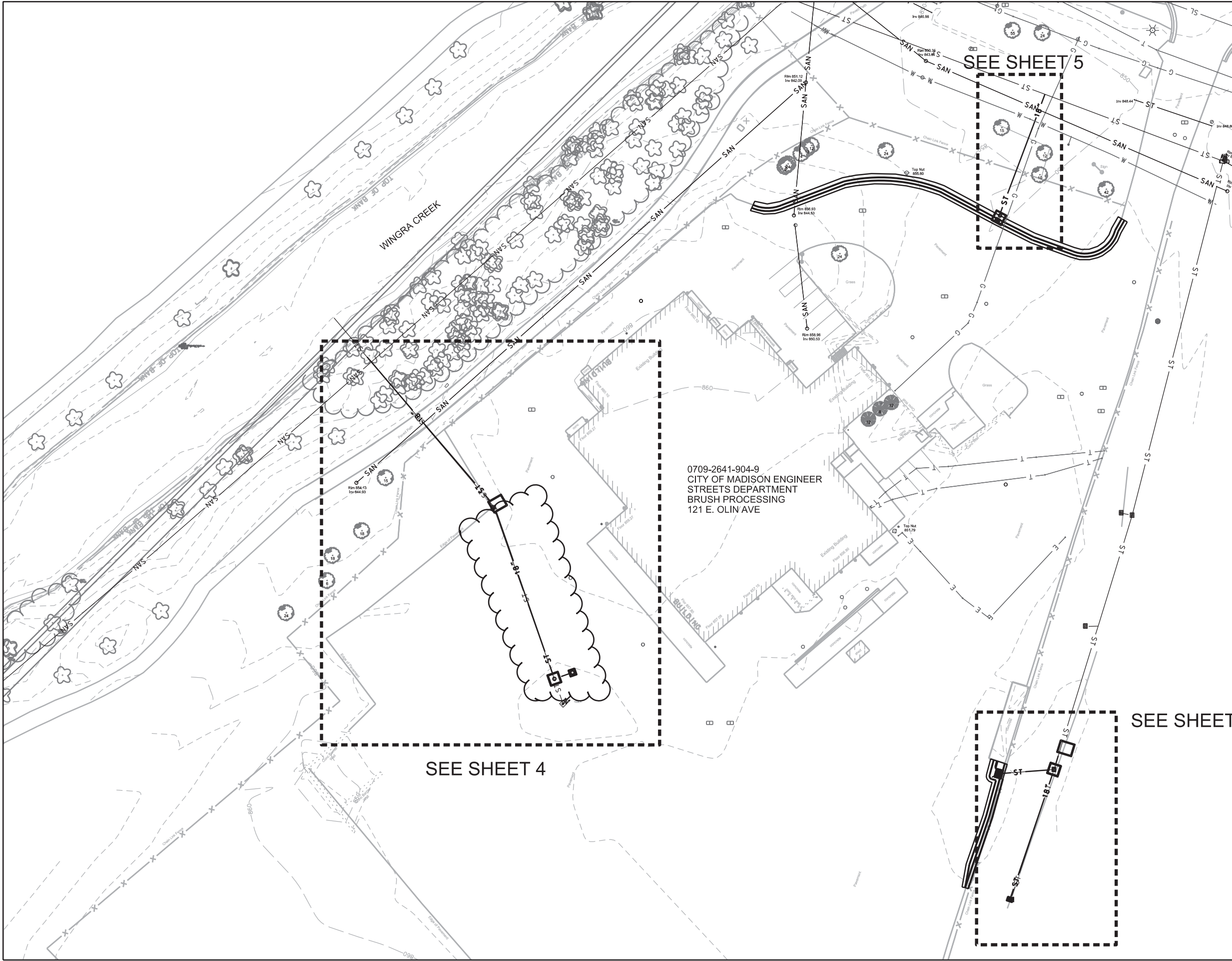
PLANNED EARTHWORK QUANTITIES
EXCAVATION CUT (UNDISTRIBUTED).....25 CY

PLOT SCALE:

PLOT NAME:

REV. DATE:

ORIGINATOR: CITY OF MADISON, STREETS DIVISION



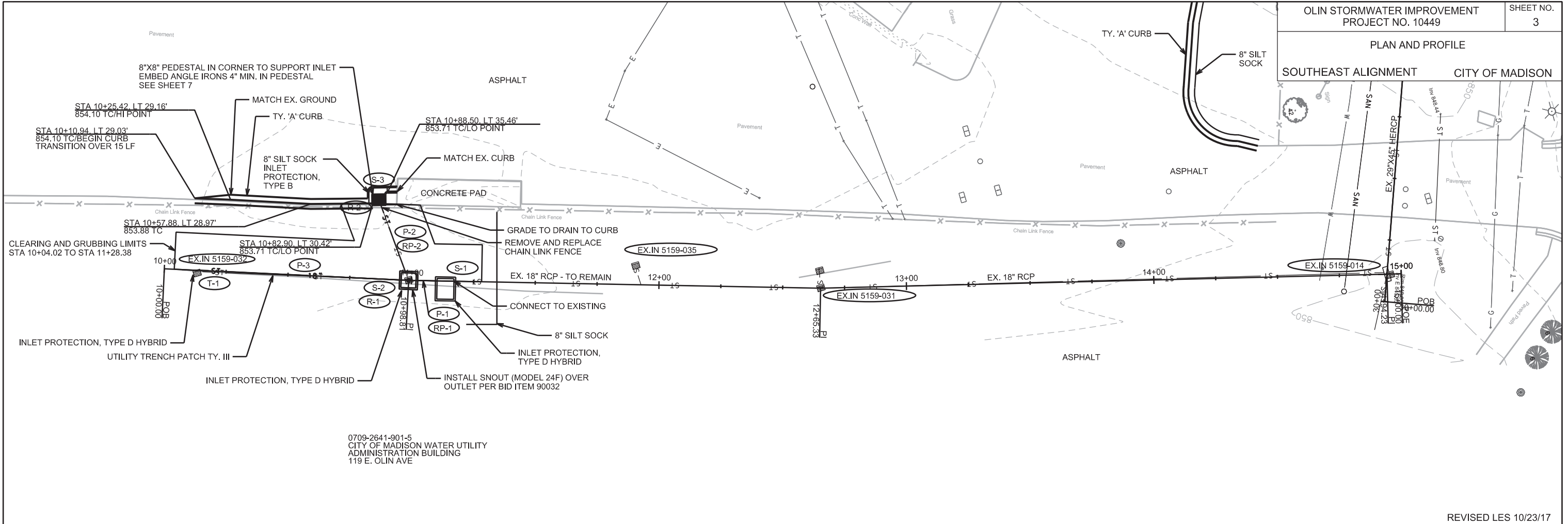
PLOT SCALE: _____

PLOT NAME: _____

REV. DATE: _____

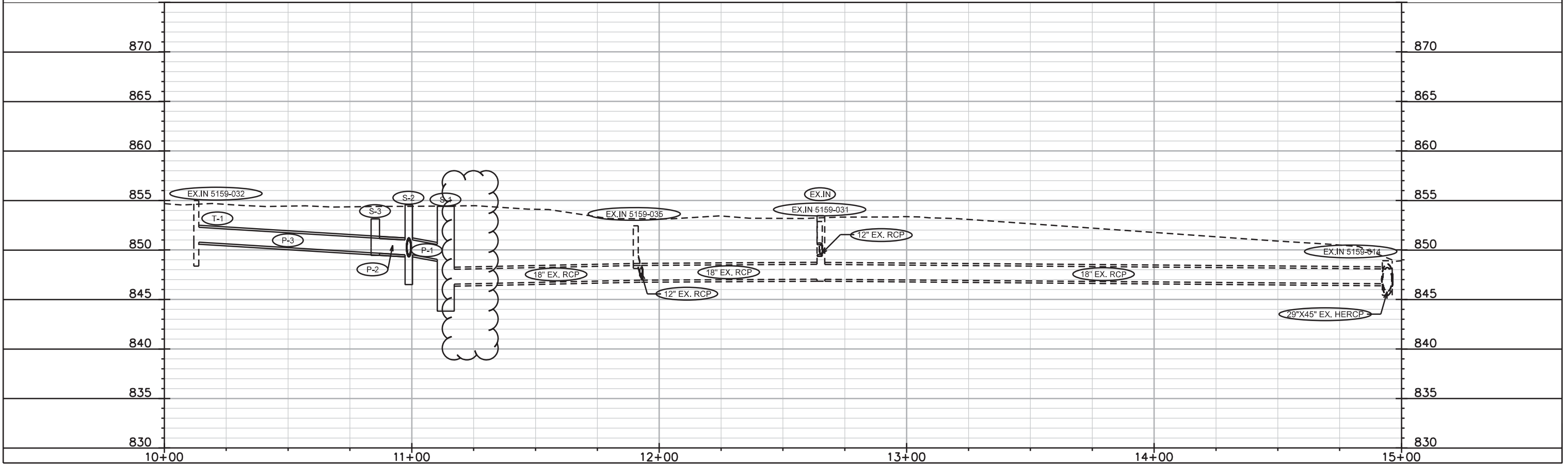
ORIGINATOR: CITY OF MADISON, STREETS DIVISION

PLAN AND PROFILE
SOUTHEAST ALIGNMENT CITY OF MADISON



0709-2641-901-5
CITY OF MADISON WATER UTILITY
ADMINISTRATION BUILDING
119 E. OLIN AVE

REVISED LES 10/23/17



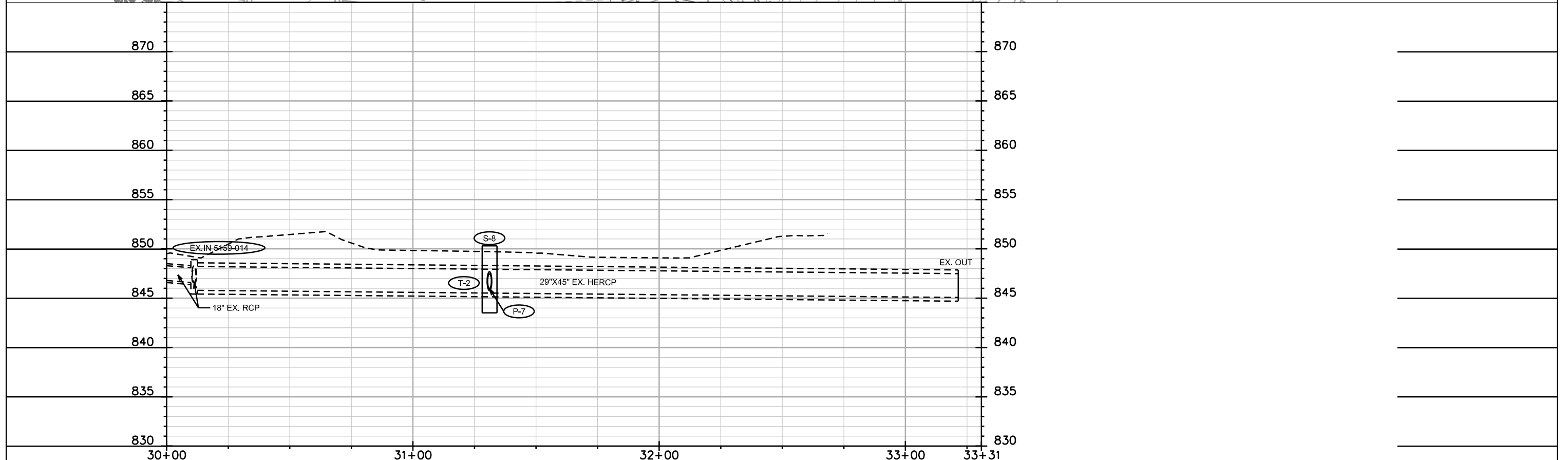
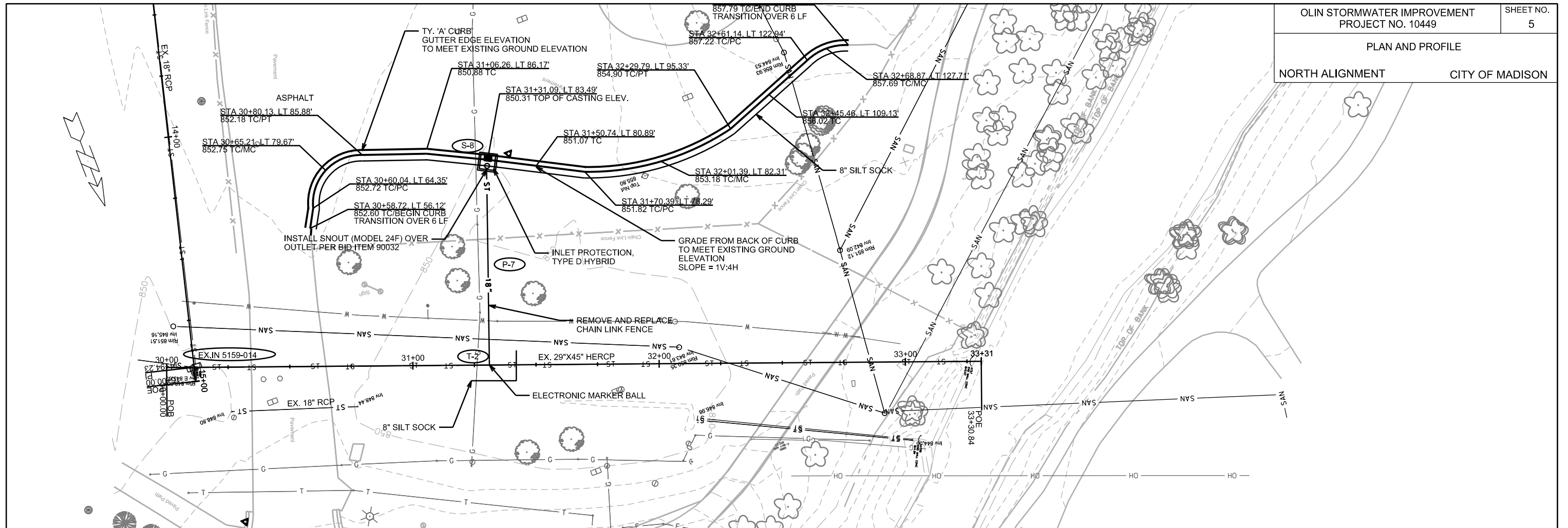
PLOT SCALE: _____

PLOT NAME: _____

REV. DATE: _____

ORIGINATOR: CITY OF MADISON, STREETS DIVISION

PLAN AND PROFILE
NORTH ALIGNMENT CITY OF MADISON



PLOT SCALE: _____

PLOT NAME: _____

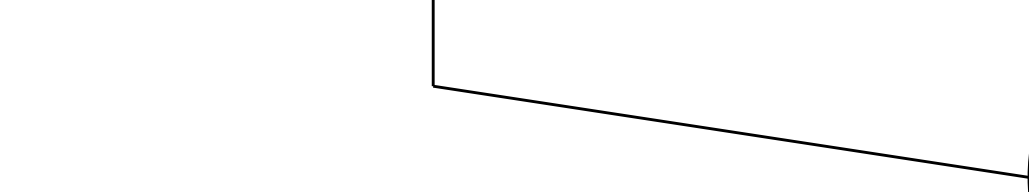
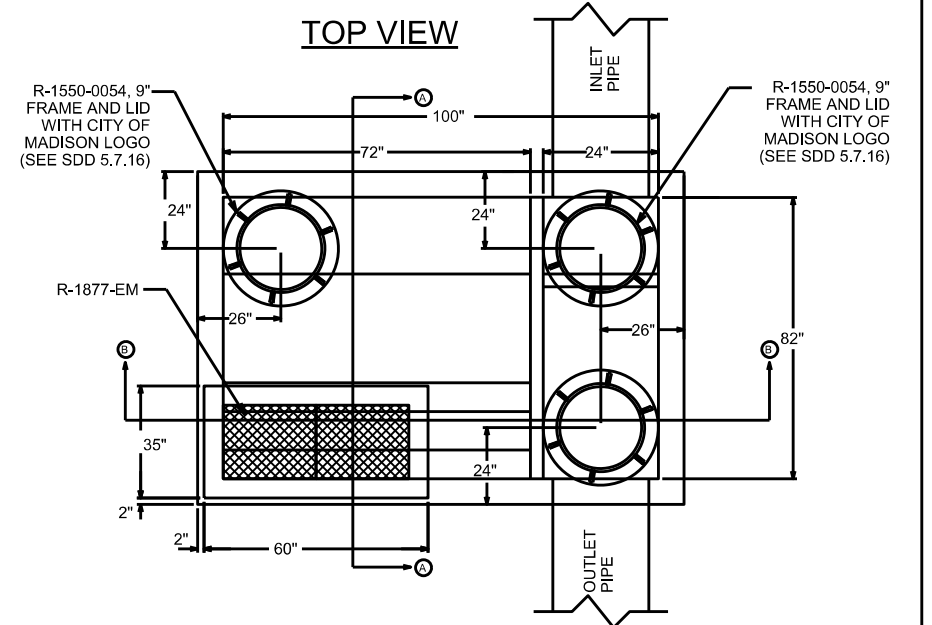
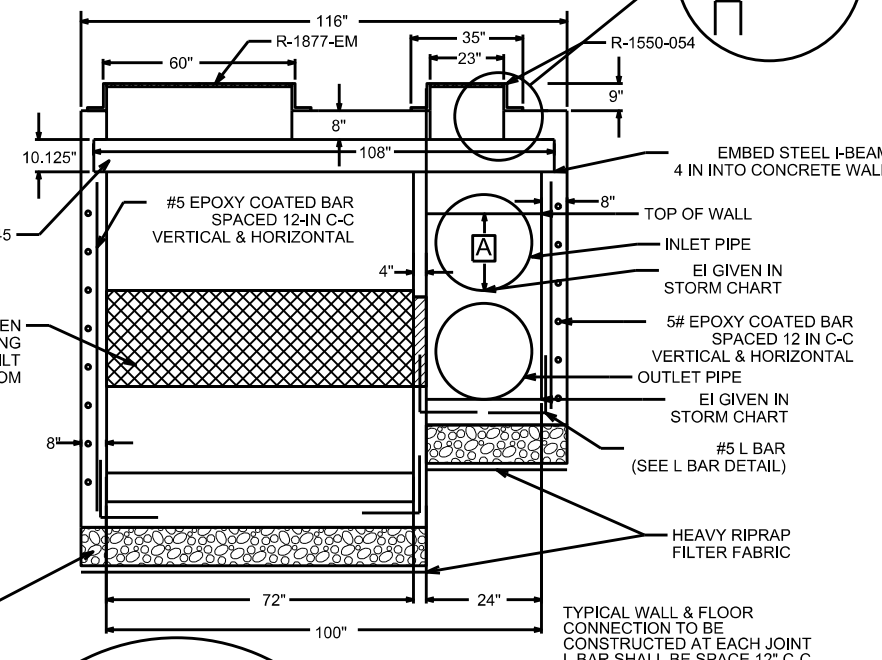
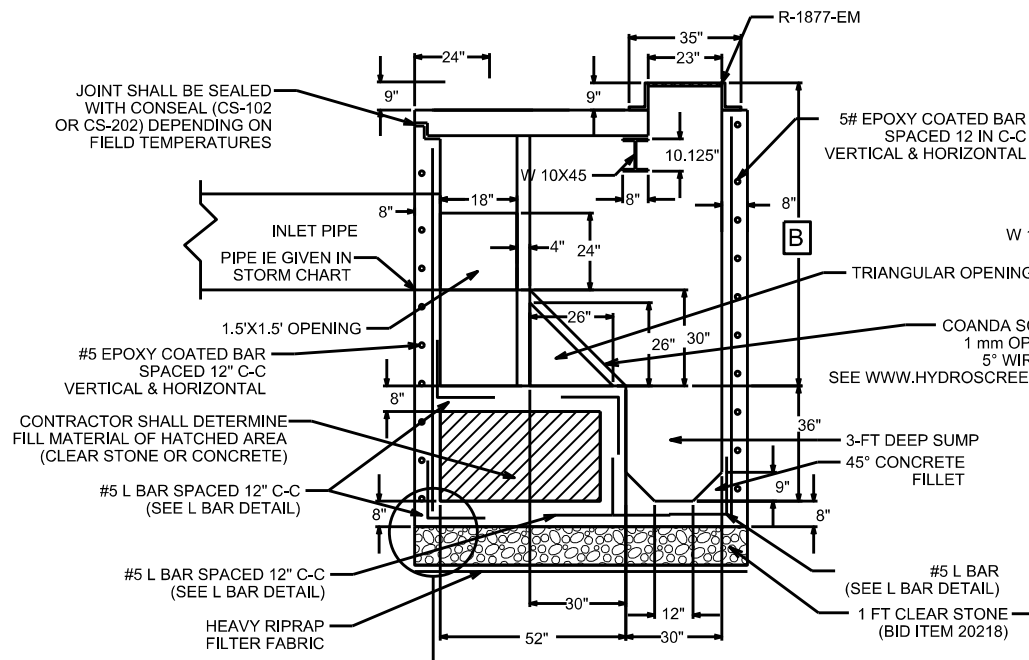
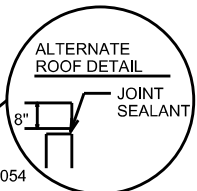
REV. DATE: _____

ORIGINATOR: CITY OF MADISON, STREETS DIVISION

NOT TO SCALE

SECTION A-A

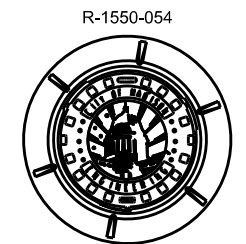
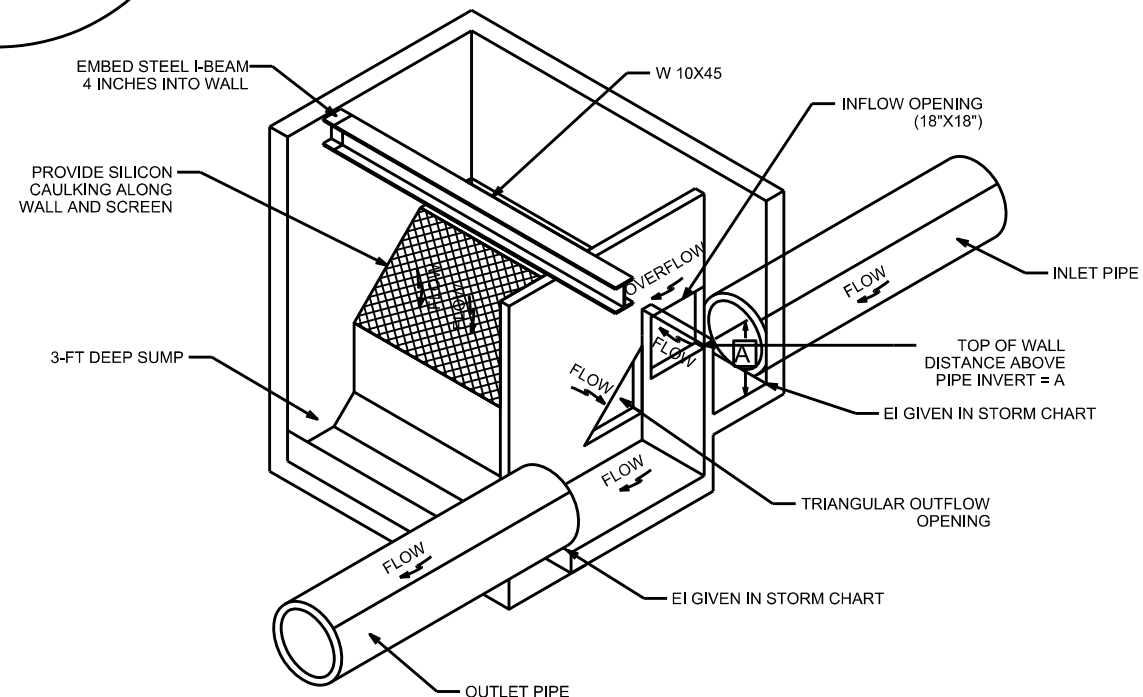
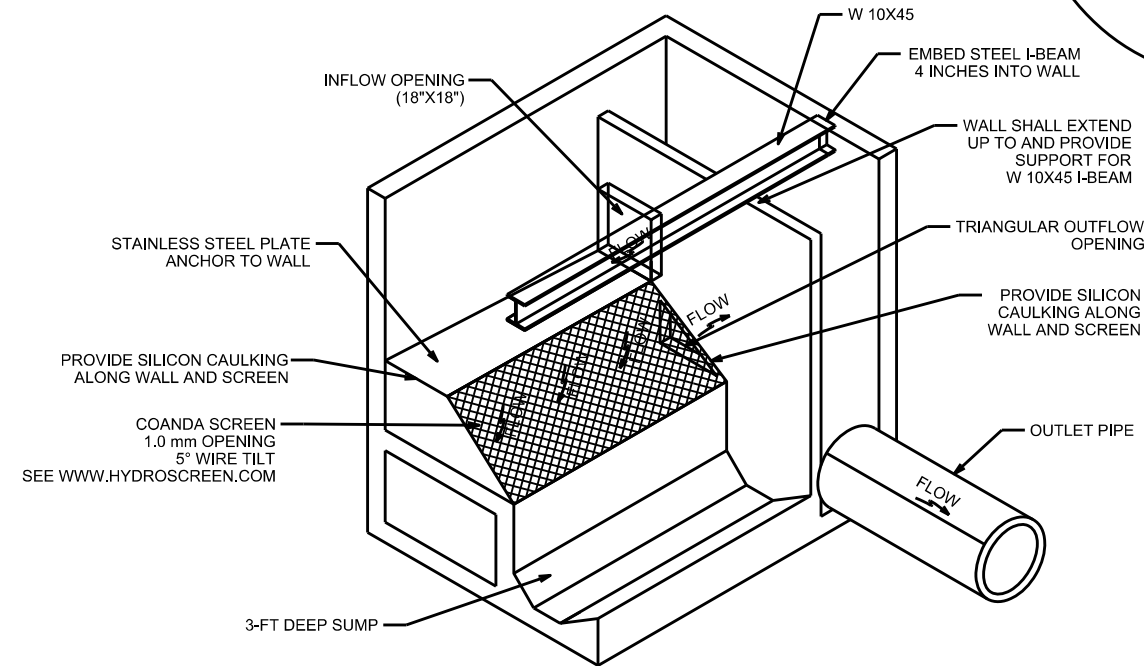
SECTION B-B



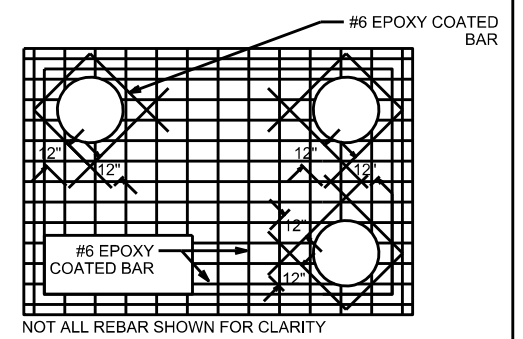
PIPE SIZE	DIMENSION A	DIMENSION B (MINIMUM)
18"	15"	82"

NE ISOMETRIC VIEW (SIDEWALLS & ROOF NOT SHOWN)

NW ISOMETRIC VIEW (SIDEWALLS & ROOF NOT SHOWN)



ROOF REINFORCEMENT

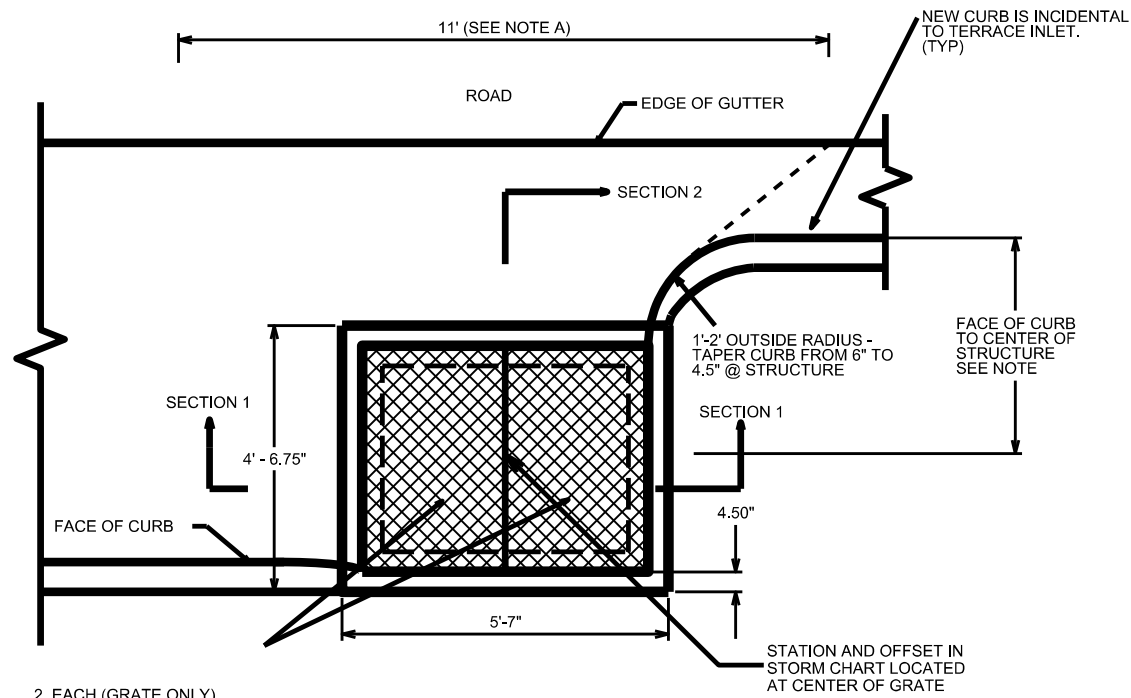


- ROOF REINFORCEMENT NOTES:
1. EPOXY COATED REBARS SHALL BE USED IN ALL CASES
 2. #6 REBARS PLACED ON 4" CENTERS
 3. 3" CLEAR SHALL BE MAINTAINED
 4. ROOF THICKNESS SHALL BE 8" MINIMUM

PLOT SCALE: _____ PLOT NAME: _____ REV. DATE: _____ ORIGINATOR: CITY OF MADISON, STREETS DIVISION

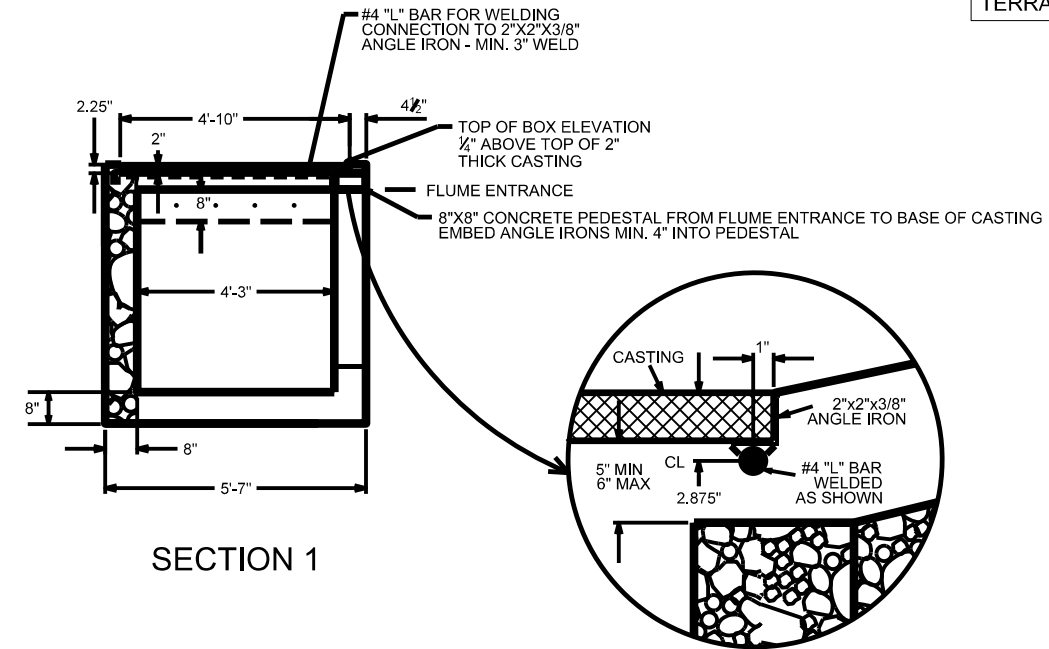
TERRACE INLET TYPE 2 DETAIL

TERRACE INLET TYPE 2 (S-3) CITY OF MADISON

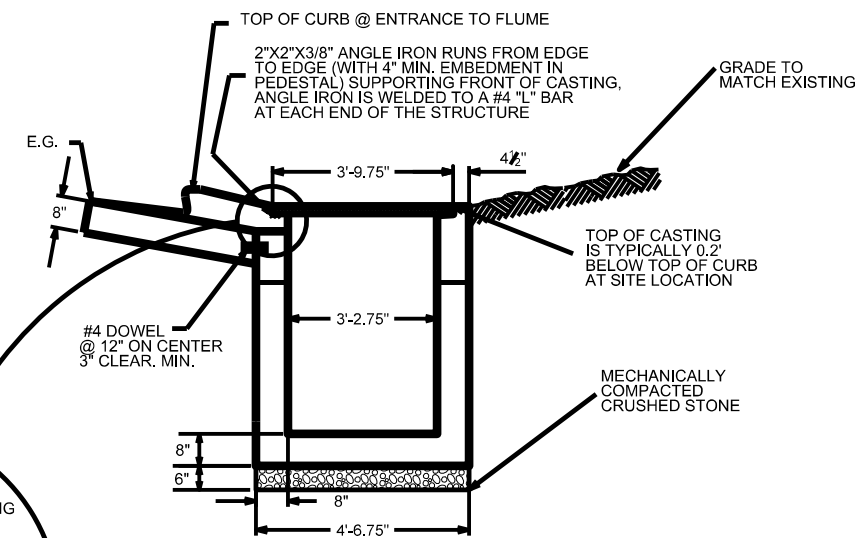


2 EACH (GRATE ONLY)
NEENAH COMPONENT
NUMBER 38080007
CASTINGS TO BE SPECIAL ORDERED
AND MADE OF DUCTILE IRON.

PLAN VIEW



SECTION 1



SECTION 2

NOTE:
DIMENSION FROM FACE OF CURB TO CENTER OF STRUCTURE

CURB TYPE	DISTANCE
TYPE A, D, G, X	3'-9"
TYPE B, E, H	4'-3"

PLAN VIEW NOTES:

(A) THE CONTRACTOR SHALL BE REQUIRED TO HAND POUR AND FORM THE LIMITS OF THE CURB ASSOCIATED WITH THE STRUCTURE UNLESS SPECIFICALLY APPROVED BY THE CONSTRUCTION ENGINEER.

A STRAIGHT LINE GRADE SHALL BE MAINTAINED FROM THE PAVEMENT EDGE OF GUTTER TO THE OUTSIDE EDGE OF THE INLET, AS SHOWN GRAPHICALLY IN SECTION #2. THE STRAIGHT LINE GRADE SHALL EXTEND 5.5' ON BOTH SIDES OF THE INLET. SEE THE DASHED LINES ON PLAN VIEW FOR REFERENCE.

PLOT SCALE:

PLOT NAME:

REV. DATE:

ORIGINATOR: CITY OF MADISON, STREETS DIVISION

STORM SEWER SCHEDULE

PROPOSED STORM STRUCTURES

STRUC NO.	STATION	LOCATION TYPE (OFFSET)	TYPE	TOP OF CASTING	E.I.	DEPTH	NOTES
SOUTHEAST ALIGNMENT							
* S-1	11+13.73	RT-3.17	SCREEN TREATMENT STRUCTURE	854.10	846.54	10.56	SEE SHEET 6, BID ITEM 90030; SEE SPEC. NOTE 6
S-2	10+98.81	LT-0.00	6'X6' STORM SAS	854.55	849.50	8.05	SEE S.D.D. 5.7.4; SEE SPEC. NOTES 1, 3, 5
S-3	10+85.26	LT-31.99	TERRACE INLET TYPE 2	853.13	849.65	3.48	SEE SHEET 7; SEE SPEC. NOTE 7
NORTHWEST ALIGNMENT							
* S-4	52+77.64	LT-0.74	CONCRETE COLLAR	-	845.08	-	SEE SPEC. NOTE 2
S-5	51+48.08	RT-3.17	SCREEN TREATMENT STRUCTURE	857.76	848.59	12.17	SEE SHEET 6 AND BID ITEM 90030
S-6	50+33.37	RT-0.08	6'X6' STORM SAS	855.50	851.72	6.78	SEE S.D.D. 5.7.4; SEE SPEC. NOTES 1, 3, 5
S-7	50+33.31	RT-12.08	3'X3' STORM SAS	855.40	852.27	6.13	R-1550; OPEN GRATE; SEE SPEC. NOTE 1
* S-9	53+02.42	LT-1.01	30 INCH AE W/ GATE	-	844.39	-	PER S.D.D. 5.4.1
NORTH ALIGNMENT							
S-8	31+30.95	LT-82.50	6'X6' STORM SAS	850.31	846.52	6.79	SEE S.D.D. 5.7.4; SEE SPEC. NOTES 1, 4, 5

PROPOSED STORM PIPES

PIPE NO.	FROM SAS (DWNSTRM)	TO SAS (UPSTREAM)	EI # (DWNSTRM)	EI # (UPSTRM)	PIPE LENGTH (FT)	PLAN LENGTH (FT)	SLOPE (%)	SIZE (DIA)	TYPE	NOTES
* P-1	S-1	S-2	849.04	849.50	9	12	5.41%	18"	RCP	
P-2	S-2	S-3	849.50	849.65	30	35	0.50%	18"	RCP	
P-3	S-2	T-1	849.50	850.78	82	85	1.56%	18"	RCP	
* P-4	S-4	S-5	845.08	848.59	126	130	2.78%	18"	RCP	
P-5	S-5	S-6	851.09	851.72	108	111	0.58%	18"	RCP	
P-6	S-6	S-7	852.22	852.27	8	12	0.67%	12"	RCP	
P-7	T-2	S-8	845.98	846.52	79	83	0.68%	18"	RCP	
P-8	S-9	S-4	844.39	845.08	25	25	2.78%	18"	RCP	

STORM STRUCTURE TAP

STRUC ID NO.	STATION	LOCATION (OFFSET)	TYPE	E.I.	NOTES
T-1	IN 5159-032	10+13.93	H INLET FLAT	850.78	SEE SPEC. NOTE 2
T-2	-	31+31.09	29"X45" HERCP	845.98	

STORM PIPE REMOVAL

PIPE REMOVAL NO.	REMOVE FROM	REMOVE TO	LENGTH (FT)	PAID (Y/N)	SIZE	TYPE	NOTES
RP-1	STA 11+17.14 RT-0.00	R-1 (IN 5159-033)	17	N	18"	RCP	
RP-2	R-1 (IN 5159-033)	R-2 (IN 5159-034)	33	N	15"	RCP	
* RP-3	STA 52+77.64 LT-0.74	R-3 (EX. IN#1 PVT)	126	N	15"/18"	RCP/CMP	
RP-4	R-3 (EX. IN#1 PVT)	R-4 (EX. IN#2 PVT)	131	N	15"	RCP	
* RP-5	STA 53+02.43 RT-0.00	STA 52+77.64 LT-0.74	25	N	12"	RCP	

STORM STRUCTURE REMOVAL

STRUC ID NO.	STATION	LOCATION (OFFSET)	TYPE	DEPTH
R-1	IN 5159-033	10+98.81	H INLET FLAT	7.76
R-2	IN 5159-034	10+86.82	H INLET FLAT	2.52
R-3	EX. IN#1 (PVT)	51+48.08	H INLET FLAT	9.25
R-4	EX. IN#2 (PVT)	50+16.87	H INLET FLAT	5.80

NOTE: PLAN LENGTH (PAY LENGTH) IS FROM CENTER OF STRUCTURE TO CENTER OF STRUCTURE. PIPE LENGTH IS ACTUAL

SPECIAL NOTES:

- STRUCTURE INCLUDES 3-FOOT SUMP BELOW LISTED INVERT
- PLACE SEWER ELECTRONIC MARKER ABOVE STORM SEWER TAP AND BEND LOCATIONS (BID ITEM 50390)
- BOTH CASTINGS TO BE R-1550 OPEN GRATE
- ONE CASTING TO BE R-1550 OPEN GRATE; ONE CASTING TO BE R-3067-7004-V (SEE SHEET 5 IN PLAN SET). TOP OF CASTING ELEVATION GIVEN IS TOP OF R-3067-7004-V CASTING.
- SNOUT MODEL 24F OR APPROVED EQUIVALENT (BID ITEM 90032) TO BE INSTALLED OVER OUTLET
- 6) DOWNSTREAM E.I. = 846.54 (CONNECT TO EXISTING 18" RCP)**
- TOP OF CASTING = 853.13; TOP OF CURB AT LOCATION = 853.33

STANDARD NOTES:

- ABBREVIATIONS: AE = APRON ENDWALL; RCP = REINFORCED CONCRETE PIPE; HERCP = HORIZONTAL ELLIPTICAL REINFORCED CONCRETE PIPE; DNA = DOES NOT APPLY; SAS = SEWER ACCESS STRUCTURE; LP = LOW POINT INLET STRUCTURE; FP = FIELD POURED STRUCTURE; TR = TOP OF CONCRETE ROOF; NCM = NO CROWN MATCH FOR PIPES; UD = UNDERDRAIN
- APPROXIMATE DISCHARGE E.I. GIVEN, ADJUST E.I. AND PIPE SLOPE IN THE FIELD.
- TOP OF CASTING GRADE GIVEN IS THE TOP OF CURB FOR INLET STRUCTURES AND THE FLOWLINE OF THE CLOSED CASTING FOR SAS'S.
- TOP OF CONCRETE ROOF (TR) IS 1.25' BELOW TOP OF CASTING UNLESS OTHERWISE NOTED.
- ALL REINFORCED CONCRETE PIPES TO BE CLASS III UNLESS OTHERWISE NOTED.
- SURVEYOR TO CONFIRM THAT ALL INLET STATION / OFFSETS LINE UP WITH PROPOSED CURB AND GUTTER.
- ALL STRUCTURES CALLED OUT AS FIELD POURED SHALL BE FIELD POURED. ALL OTHER STRUCTURES (NOT INDICATED AS FIELD POURED) SHALL BE SUBMITTED TO CITY ENGINEERING FOR APPROVAL IF PRECAST STRUCTURES ARE PREFERRED. CONTACT LAUREN STRIEGL OF CITY ENGINEERING AT (608) 266-4094, LSTRIEGL@CITYOFMADISON.COM, FOR PRECAST APPROVALS, OR FAX SHOP DRAWINGS TO (608) 264-9275.

PLOT SCALE: 1"=40'

PLOT NAME: 10/20/2017

REV. DATE: 10/20/2017